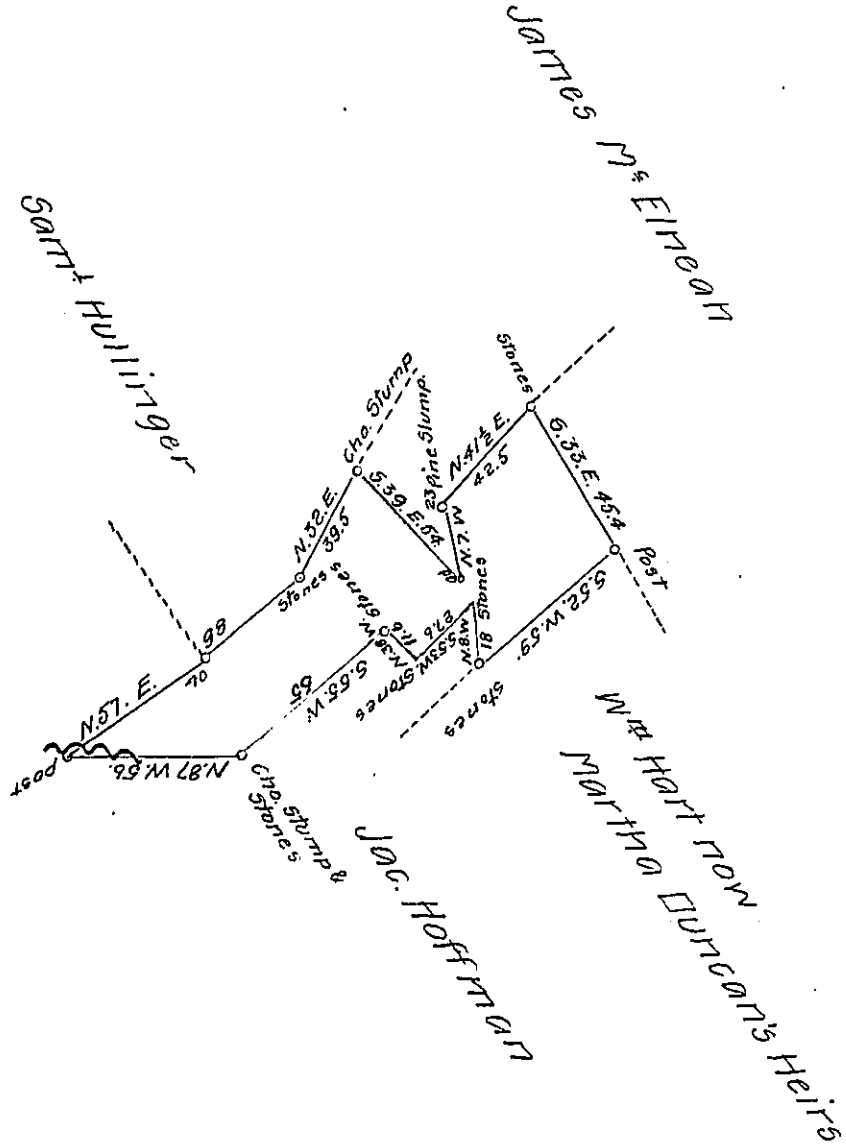


FORM No. 1.



situate in Middle Woodberry Township Bedford County, containing 36⁰⁰ 139 perches and the usual allowance of six percent for Roads, &c surveyed the 14th day of May A.D. 1868. in pursuance of a Warrant granted to James Madara dated the 12th day of May A.D. 1868 for 37⁹

Saml Kellerman D.S.

To J. M. Campbell Esq^r S. G.

Approved this 10th day of May A.D. 1868.

P. Donahoe C. S.

IN TESTIMONY that the above is a copy of the original remaining on file in the Department of Internal Affairs of Pennsylvania, made conformably to an Act of Assembly approved the 16th day of February 1833, I have hereunto set my hand and caused the Seal of said Department to be affixed at Harrisburg, this twenty second day of August 1907

Henry Howell
Secretary of Internal Affairs.